

inspiration

All Enquiries:
+91 93910 30561 / +91 93966 79399
+91 9347 151515 / +91 93911 33344

Email:
inspiration@fortunedevelopers.in

These particulars are prepared with all due care for the convenience of intending purchasers but the information provided is intended as a preliminary guide and does not form part of any contract. The developer reserves the right to vary the specification as necessary to complete the works and their accuracy is not guaranteed.

FORTUNE Developers
JV with Aliens group

Flat # 509, SMR Vinay Prangan, Hi-Techno Enclave,
Madhapur, Hyderabad - 500081. AP, INDIA.

Ph: +91 93910 30561 / 9347 151515
+91 93966 79399 / 93911 33344
Email: fortune@fortunedevelopers.in

Visit us at: www.fortunedevelopers.in

Brochure design: www.element8.co.in

TAKE A 'LEAP'

INTO THE



inspiration

by

FORTUNE
DeveloPERS
JV with Aliens group

Future is:



Unrestricted Freedom



Eco-friendly Spaces

Modular Designing



FUTURE is...

inspiration

An Experience

The foundation of a dream has begun. Fortune is an innovative residential development comprising a fusion of contemporary & modern architectural houses that set a precedent in today's modern community living.

Our team of experts leave no stone unturned to understand the need of the new age home maker and cater to each family members interest at its best.

An architecturally inspired community, planned for those who blend contemporary comfortable living with the edge of innovation, our houses are set in the habitat of nature and yet within the city curves.

Each of these architectural splendors set the heart racing with their superlative structures, landscaped gardens, open spaces, invincible amenities and fantastic features. Thus redefining convenience & lifestyle for the entire family.





Live at Fortune & have a brilliant urban lifestyle at your doorstep. This incredibly convenient location is set in a quiet undiscovered neighborhood that will allow you to enjoy life to the fullest.

Whether you're looking for more living space or downsizing, at Fortune you don't have to compromise your comfortable lifestyle or your amenities. Each and every home will offer a number of great interior appointments, & the floor plans are spacious and beautifully designed.

The buildings will exist in an elegantly landscaped environment, with tree lined, paved boulevards and public open parklands encompassing open green parks, foreshore walkways and recreational spaces.

How are we Different..?

- Elegant Modern Elevation.
- House ready to move in.
- Well balanced Design by Fortune design team keeping in mind space utilization, furniture & equipment location, safety factoring
 - > Multi Flour level
 - > Esthetically design interiors,
 - > Entertainment room,
 - > Terrace garden
 - > Lawn & garden in open areas

House Ready to move in:

- Interiors design to execution
- 5 Split A/c s
- Washing machine with dishwasher and dryer
- Modular kitchen with electric chimney and HOB
- Solar fencing
- Video phone
- Curtains rods & lights
- Solar Water Heater
- Minimum Bath fittings storage box & Mirrors



- Care team to customize flats & single point contact from sale to possession. It is a team of professional architects and creative interior designers.
- F&L team Serves in availing the Home Loans from deferent financial institutes and saves the time by dealing with the bankers time to time loan disbursements and assists in Agreements & Registration.
- Support team will support after possession for one year from the date of possession and also service center for home relating to electrical, plumbing, interiors, painting etc.
- Split level floor - Lower level in Northeast for aesthetic Feed by 1ft and for Vaastu.
- Aesthetically designed interiors by professional design team.
- Intercom & Video Security System
- RO system for Drinking Water
- 3 kva power backup
- Water Resistance and maintenance free Powder coated Aluminum
- Weather coated exterior Paints for longer life.
- Bath Tubs of Lauret*
- Elegant look Vitrified Tiles
- Water Harvesting Pits (Recharge ground water)
- 100% positive Vaastu.
- Contemporary design block for IT professionals.
- Pleasant residential area with free from noise & smoke pollution little away from main roads.



- Walk in wardrobe & dress for all the Master bed rooms.
- Central court yard for all the houses.
- Beautifully landscaped gardens in the compound with water falls in all the open areas.
- Sunlight designed for maximum cross, ventilation, Privacy and over looking landscaped central courtyard.
- Complex maintenance from professional Property Management Company
- For fast track life style



inspiration Specification

Kitchens

- Custom Designed Modular Kitchens with electric
- Chimney & Hob
- Integrated Appliances by World-renowned companies
- Provision made for cupboards
- Granite Platform / Bell Tiles
- Front Loading washing Machine / Dryer
- Washing Machine & Dishwasher

Windows, Doors & Balcony Doors

- Main door frames of MT teak
- All internal doorframes are of Teak
- Flush Door (Internal doors)
- Windows of anodized Aluminum Frames & shutters Glazed sliding door (OR)
- UPVC Window systems (hollow multi chambered with EPDM gaskets and steel Reinforcement)
- Generous glass fronted French balconies with feature lighting



Bathrooms

- Under mounted Sink
- Stone Worktops
- Non slippery ceramic tile flooring
- Wall cladding
- Wall mixture, shower of Plumber/ Seiko / Essess or equivalent make.
- Parry ware John Peddar / Rassi / Cera sanitary ware.
- Water Proofing
- Solar water heater with back up electric water heater.
- ISI GI / Pvc piping

Flooring

- Split floor level (1 feet lower in north east corner)
- Vitrified Tiles
- Wooden flooring at few locations as per interior design

Foundation & Structure

- RCC framed structure on Footing over hard strata with plinth beams for extra Safety

Electrical

- T.V. Point (All BR & Drawing)
- Telephone (Drawing & All BR)
- Electricity-5KVA 3 phase Connection/3 KVA Backup
- Power plugs 2 (15 Amps plug) for Kitchen & Dining
- Concealed copper wiring with adequate points with ABB or Equivalent Modular switch
- Three phase Power Supply

Security

- Video phone entry system
- Electric operated vehicle entrance gates providing secure parking
- Solar Fencing & Intercom facility

Comfort & Hygiene

- RO System for Drinking Water
- Water Softener
- Centralized Cooking gas connection
- Servant room with attach toilet
- 2 Car garage parking (covered)
- Storage space for tools and other accessories
- Landscaped Open areas along with water bodies
- Manjeera Water & Sewage
- Sky light in central house over the court as well as for the toilets and basement which will enhance the lightening for the complete house

Finishes

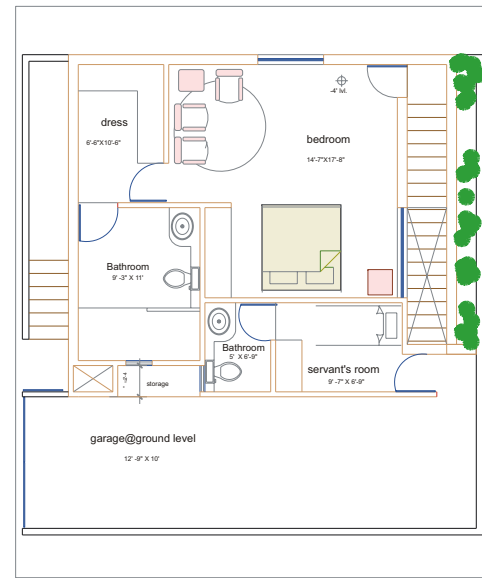
- Split AC's in all Bed rooms, Living, Dining, Entertainment room
- False ceiling with designer lights in all Rooms.
- Smooth Plastered walls & ceilings with modern color schemes over Luppum
- Shutters made of designer veneer flush wood

Entertainment / Communications

- Entertainment Room with speaker cabling
- World space music system
- Communal Terrestrial & Satellite Dish / Cable TV receivers
- Library
- Parry place with Barbeque option
- Terrace gardens



Elevation & Floor Plans



CONCEPT

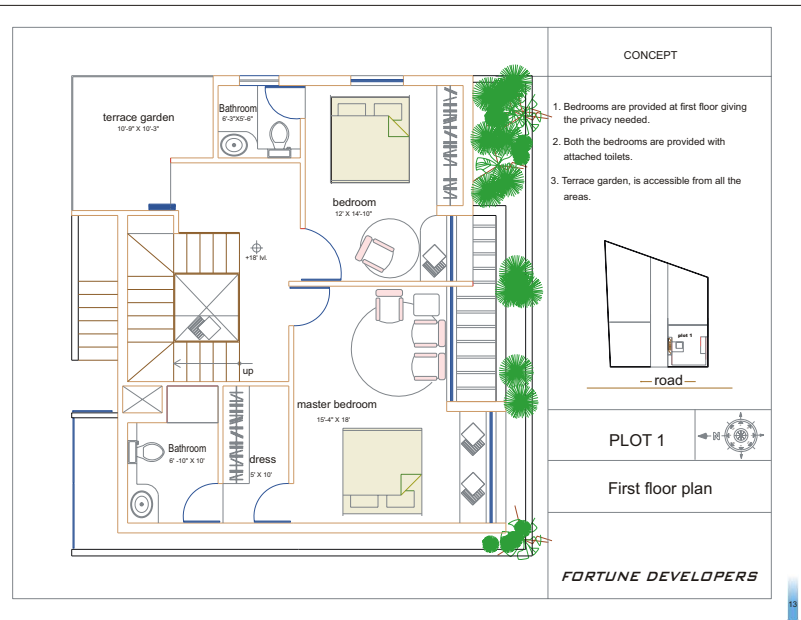
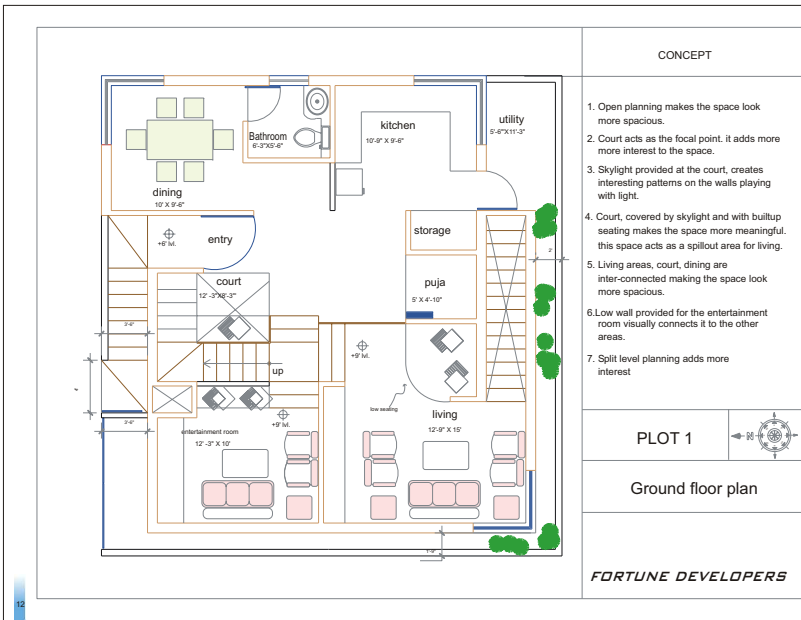
1. Bedroom provided at the basement is ideal for both summers and winters.
2. Ample ventilation is provided even in the basement.
3. Skylights add more interest to the space.
4. Servant's room is provided at the ground level. the entry to the room is from the garage hence, other areas are not disturb also giving servants their privacy.

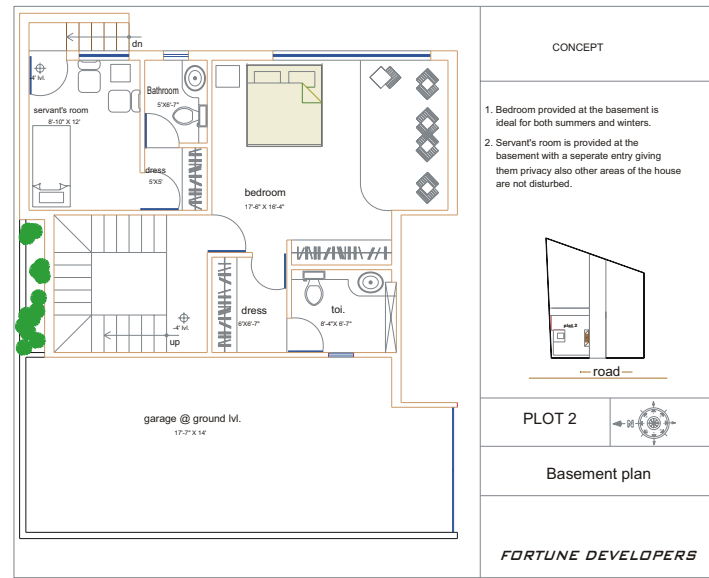
— road —

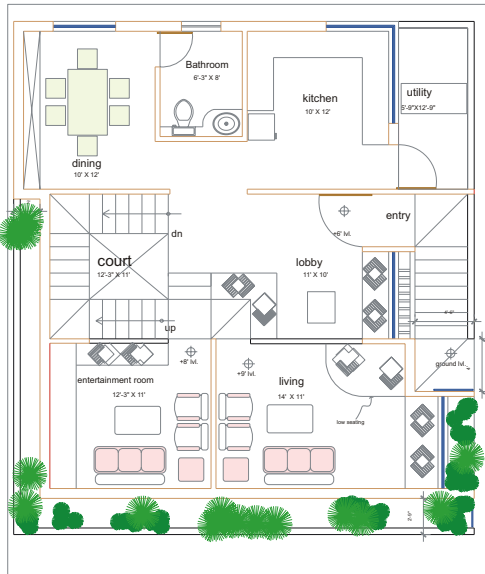
PLOT 1

Basement plan

FORTUNE DEVELOPERS







CONCEPT

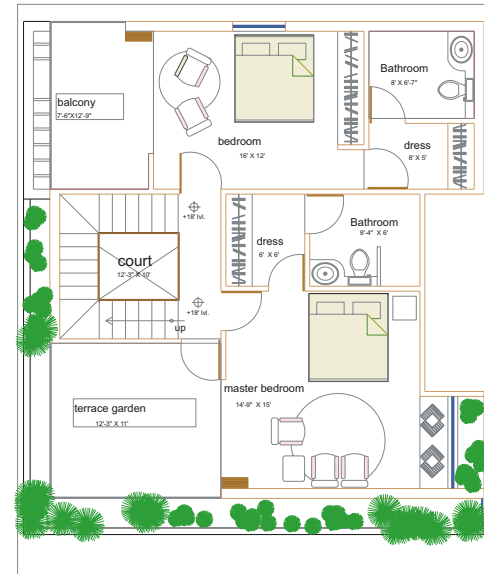
1. Open planning makes the space look more spacious.
2. Court acts as the focal point. It adds more interest to the space.
3. Skylight provided at the court, creates interesting patterns on the walls playing with light.
4. Separate lobby with builtup seats blends well with the court theme as well as acts as a spill-out area for the living.
5. Living areas, court, dining are inter-connected making the space look more spacious.
6. Low wall provided for the entertainment room visually connects it to the other areas.
7. Split level planning adds more interest

PLOT 2



Ground floor plan

FORTUNE DEVELOPERS



CONCEPT

1. Bedrooms are provided at first floor giving the privacy needed.
2. Both the bedrooms are provided with dress and toilet.
3. Both the bedrooms are provided with private sitout areas.
4. Terrace garden, if needed, can be used privately for the master bedroom



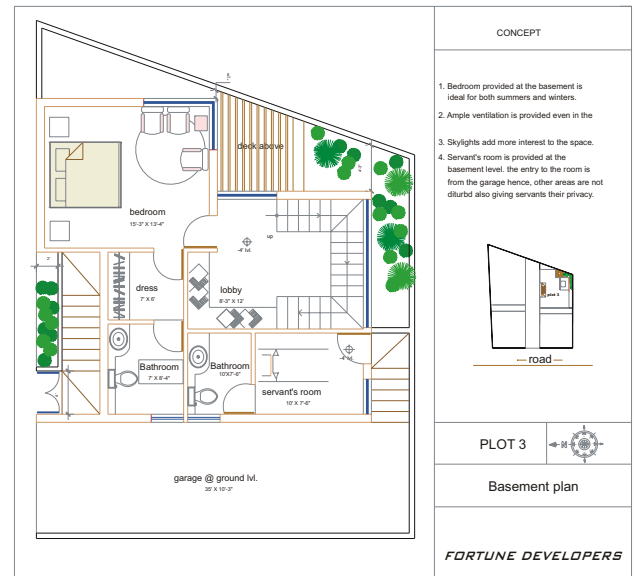
— road —

PLOT 2



First floor plan

FORTUNE DEVELOPERS





CONCEPT

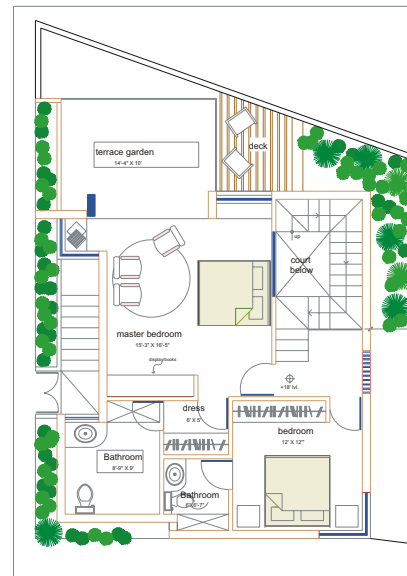
1. Open planning makes the space look more spacious.
2. Court acts as the focal point. It adds more interest to the space.
3. Skylight provided at the court, creates interesting patterns on the walls playing with light.
4. Court, covered by skylight makes the space more meaningful. also, court acts as a spillout area for living.
5. Living areas, court, entertainment room are inter-connected making the space look more spacious.
6. Split level planning adds more interest
7. Living and entertainment room, look out to the lawn, lawn, with deck, acts as a spill out area for social gatherings.
8. Huge lawn provided, gives a visual treat.

PLOT 3



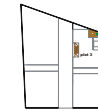
Ground floor plan

FORTUNE DEVELOPERS



CONCEPT

1. Bedrooms are provided at first floor giving the privacy needed.
2. Both the bedrooms are provided with attached toilets.
3. Master bedroom is provided with private terrace garden.
4. Master bedroom looks out to the deck and the court adding more interest.
5. Skylights provided in the toilets not only provides ample ventilation, but also acts as an interesting element.

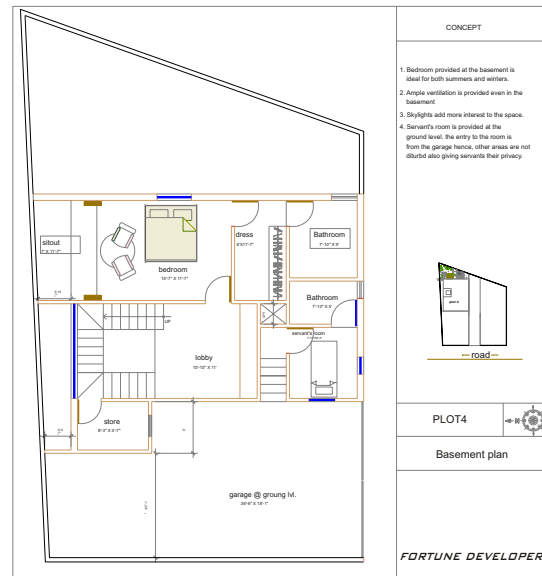


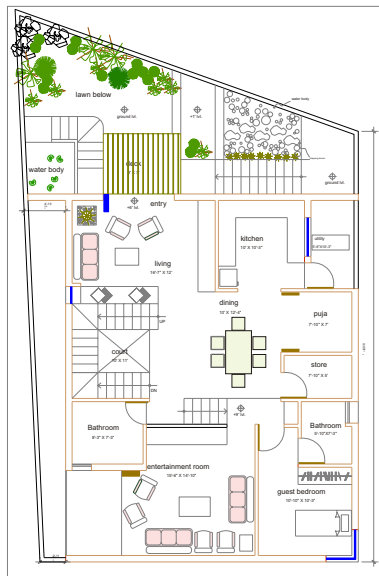
PLOT 3



First floor plan

FORTUNE DEVELOPERS





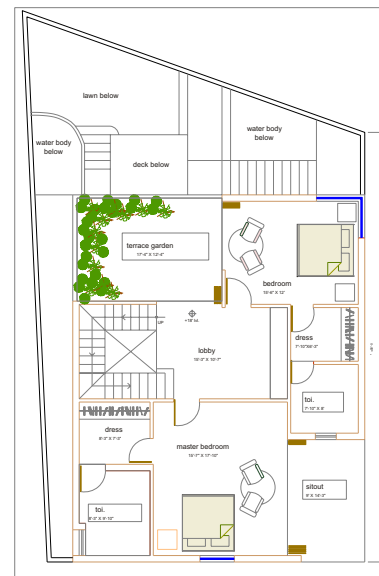
CONCEPT

1. Open planning makes the space look more spacious.
2. Court acts as the focal point. It adds more interest to the space.
3. Skylight provided at the court, creates interesting patterns on the walls playing with light.
4. Court, covered by skylight makes the space more meaningful also, court acts as a suitable area for living.
5. Living areas, court, entertainment room are inter-connected making the space look more spacious.
6. Split level planning adds more interest.
7. Low wall provided for the entertainment room visually connects it to the other.
8. Huge lawn provided, gives a visual treat.

PLOT 4

Ground floor plan

FORTUNE DEVELOPERS



CONCEPT

1. Bedrooms are provided at first floor giving the privacy needed.
2. Both the bedrooms are provided with dress and toilet.
3. Master bedrooms look out to the court adding more interest.
4. Terrace garden, is accessible from all the areas.
5. Skylights provided in the toilets not only provides ample ventilation, but also acts as an interesting element.

PLOT 4

First floor plan

FORTUNE DEVELOPERS

FORTUNE Inspiration
Bird's eye 'View'

